

TOP GROWTH MINDSET Television Shows




- | | |
|---|--|
| <input type="checkbox"/> 1. 3rd and Bird (ages 3-5) | <input type="checkbox"/> 21. Fireman Sam (ages 3-5) |
| <input type="checkbox"/> 2. Addison (ages 3-6) | <input type="checkbox"/> 22. Franklin (ages 3-6) |
| <input type="checkbox"/> 3. Annedroids (ages 7-11) | <input type="checkbox"/> 23. George & Martha (ages 4-6) |
| <input type="checkbox"/> 4. Beat Bugs (ages 5-7) | <input type="checkbox"/> 24. Guess How Much I Love You (ages 3-5) |
| <input type="checkbox"/> 5. Berenstain Bears (ages 4-7) | <input type="checkbox"/> 25. Healing Powers of Dude (ages 8-13) |
| <input type="checkbox"/> 6. Bing (ages 3-6) | <input type="checkbox"/> 26. Inbestigators (ages 8-12) |
| <input type="checkbox"/> 7. Blaze and the Monster Machines (ages 3-6) | <input type="checkbox"/> 27. Jane and the Dragon (ages 5-8) |
| <input type="checkbox"/> 8. Bluey (ages 3-7) | <input type="checkbox"/> 28. Julie's Greenroom (age 4-11) |
| <input type="checkbox"/> 9. Blue's Clues (ages 2-6) | <input type="checkbox"/> 29. Kazoops (ages 3-6) |
| <input type="checkbox"/> 10. Charlie & Lola (ages 3-6) | <input type="checkbox"/> 30. Les Enfants Prodiges (ages 8-13) |
| <input type="checkbox"/> 11. Creative Galaxy (ages 4-7) | <input type="checkbox"/> 31. Little Einsteins (ages 3-6) |
| <input type="checkbox"/> 12. Curious George (ages 2-6) | <input type="checkbox"/> 32. Little Lunch (ages 7-11) |
| <input type="checkbox"/> 13. Cyberchase (ages 8-11) | <input type="checkbox"/> 33. Luna Petunia (ages 4-9) |
| <input type="checkbox"/> 14. Daniel Tiger's Neighborhood (ages 2-7) | <input type="checkbox"/> 34. Mickey Mouse Clubhouse (ages 2-6) |
| <input type="checkbox"/> 15. Dino Dan (ages 4-9) | <input type="checkbox"/> 35. Mike the Knight (ages 3-7) |
| <input type="checkbox"/> 16. Dino Dana (ages 4-9) | <input type="checkbox"/> 36. Mouk (ages 4-7) |
| <input type="checkbox"/> 17. Dinosaur Train (ages 3-6) | <input type="checkbox"/> 37. Mr. Dressup (ages 3-7) |
| <input type="checkbox"/> 18. Doc McStuffins (ages 3-7) | <input type="checkbox"/> 38. Mr. Rogers' Neighborhood (ages 3-8) |
| <input type="checkbox"/> 19. Dragons: Race to the Edge (ages 8-11) | <input type="checkbox"/> 39. My Little Pony: Friendship Is Magic (ages 5-11) |
| <input type="checkbox"/> 20. Elena of Avalor (age 5-9) | |

TOP GROWTH MINDSET Television Shows



- 40. Napkin Man (ages 4-7)
- 41. Nature Cat (ages 5-9)
- 42. Nella the Princess Knight (ages 3-7)
- 43. Nelly & Nora (ages 3-5)
- 44. Nina's World (ages 3-6)
- 45. Odd Squad (ages 4-9)
- 46. Passe Partout (French Canadian) (ages 3-7)
- 47. PAW Patrol (ages 3-7)
- 48. Peg + Cat (ages 3-7)
- 49. Pete the Cat (ages 3-6)
- 50. Pinkalicious (ages 3-6)
- 51. Pinky Dinky Doo (ages 3-6)
- 52. Pocoyo (ages 3-6)
- 53. Puffin Rock (ages 2-5)
- 54. Sid the Science Kid (ages 3-6)
- 55. Stella & Sam (ages 2-5)
- 56. Stinky and Dirty (ages 2-6)
- 57. StoryBots (ages 3-6)
- 58. Super Why (ages 3-6)
- 59. Tayo the Little Bus (ages 3-6)
- 60. The Bravest Knight (ages 4-7)
- 61. The Magic School Bus (ages 5-10)
- 62. The Magic School Bus Rides Again (ages 4-10)
- 63. The Wild Thornberrys (ages 7-11)
- 64. The Wonder Pets! (age 3-7)
- 65. Timmy Time (ages 2-6)
- 66. True and the Rainbow Kingdom (ages 4-9)
- 67. Tumble Leaf (ages 3-6)
- 68. WellieWishers (ages 4-10)
- 69. Wild Kratts (ages 5-9)
- 70. Word Party (ages 2-5)



Disclaimer: Parents and teachers are advised to watch or read about the shows to make sure they are appropriate for their children.

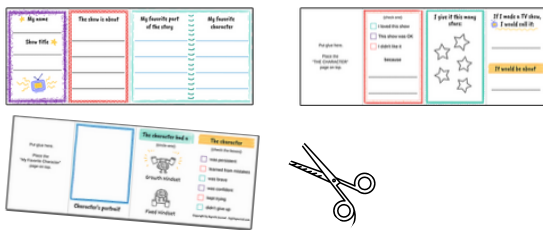
My TV SHOW REVIEW

HOW TO MAKE

- 1 Print on two separate sheets of paper.



- 2 Cut on the dotted lines. You will have three strips of paper.



- 3 Fold each strip in half, then unfold. Then, fold the ends to meet the crease in the middle.



- 4 Glue the strips together. Fold as an accordion book as shown.



★ My name

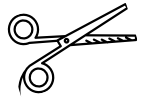
Show title ★



The show is about

My favorite part
of the story

My favorite
character



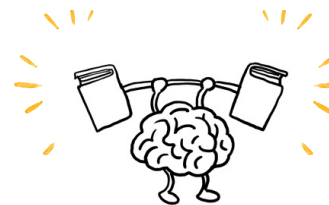
Put glue here.

Place the
"My Favorite Character"
page on top.

Character's portrait

The character had a

(circle one)



Growth Mindset



Fixed Mindset

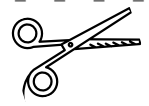
The character

(check the boxes)

- was persistent
- learned from mistakes
- was brave
- was confident
- kept trying
- didn't give up

Put glue here.

Place the
"THE CHARACTER"
page on top.



(check one)

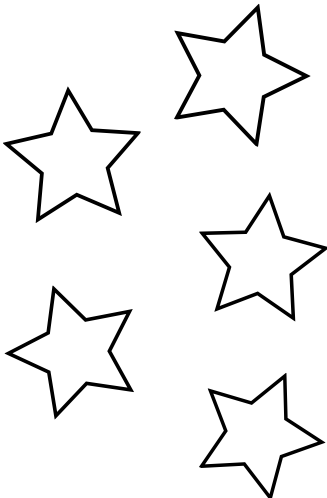
I loved this show

This show was OK

I didn't like it

because

I give it this many stars:



If I had a TV show, it would be called:



~~~~~

---

**It would be about**

---